

Leading Supplier of Intelligent Manufacturing Software Platform

Japan Branch
☎ : 044-589-7195

Korea Branch
☎ : 070-7209-0438

Singapore Branch
☎ : 65-6223-7877/6224-7877

Shanghai Branch
☎ : 021-5407-1980/5407-1618

Guangzhou Branch
☎ : 020-3828-8201/3835-0462

Taiwan Branch
☎ : 02-2737-3526

Chengdu Office
☎ : 028-8525-4844

Shenyang Office
☎ : 024-3109-1257/3109-1267

Changsha Office
☎ : 0731-8971-2816

Guangxi Office
☎ : 189-7808-1002

Hefei Office
☎ : 182-5601-2528

Hangzhou Office
☎ : 180-1900-1983

Jinan Office
☎ : 0531-8806-1305

Kunming Office
☎ : 138-8820-2965

Nanjing Office
☎ : 025-8473-2946

Qingdao Office
☎ : 0532-8762-9656

Chongqing Office
☎ : 023-6879-5613

Shenzhen Office
☎ : 188-2080-9513

Tianjin Office
☎ : 153-4203-1503

Taiyuan Office
☎ : 0351-702-0391

Xi'an Office
☎ : 029-8958-5300

Xiamen Office
☎ : 173-0201-9592

Zhengzhou Office
☎ : 186-3853-3231

WellinTech (Headquarter)
Address: 602, E-Wing Center, No.113,
ZhiChun Road, Haidian Dist. , Beijing,
100086, China
Call: 010-5930-9666
Fax: 010-5930-9680



Business Contacts



WeChat Public Account



KingView

WellinTech Co.,Ltd.
www.wellintech.com | www.kingview.com

●●●● Introduction to KingView

KingView, a premier configurable SCADA software for industrial automation. KingView is the first industrial automation configurable SCADA software brand in China, primarily caters to the low and mid-end market of the industrial production monitoring market. It places a strong emphasis on monitoring and controlling equipment operation status, as well as section-level or production line operations. With a strategic focus on enterprise integration, KingView has consistently maintained its leadership position in the China's configuration SCADA/HMI software market for over two decades, having the wide-spread installation around the world as well. Its unwavering commitment to stable performance and excellent service has earned widespread acclaim and recognition within the industry.

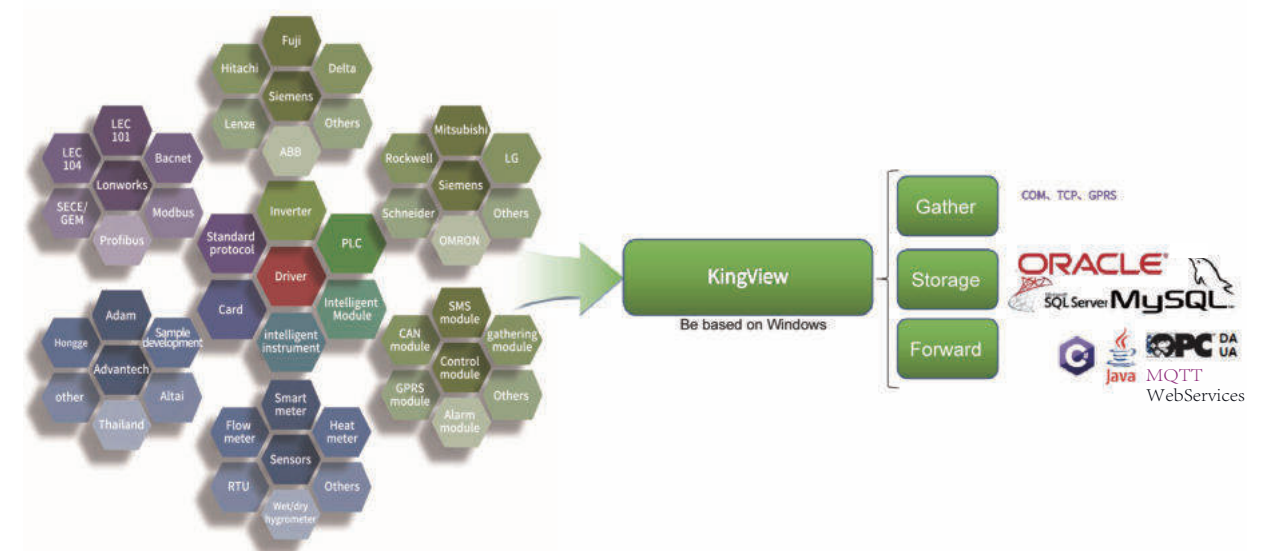
KingView is extensively utilized for monitoring industrial production sites. It offers a configuration development environment and a wide range of functional modules, facilitating engineers in rapidly creating, testing, and deploying industrial applications. The runtime environment demonstrates exceptional stability and reliability in industrial sites."



Main features ●●●●

Full range of device drivers

The KingView, with more than 5,000 device protocol drivers, supports a wide range of devices from nearly 1,000 manufacturers, including the mainstream PLCs, smart meters, smart modules and other device drivers and the standard protocols from power, building, semiconductor, general Modbus and other fields. The communication links supported include the serial port (RS232, RS485, RS422), USB interface, Ethernet interface, ISA, PCI and other bus acquisition cards, special communication cards, GPRS, SMS, OPC and other communication methods.

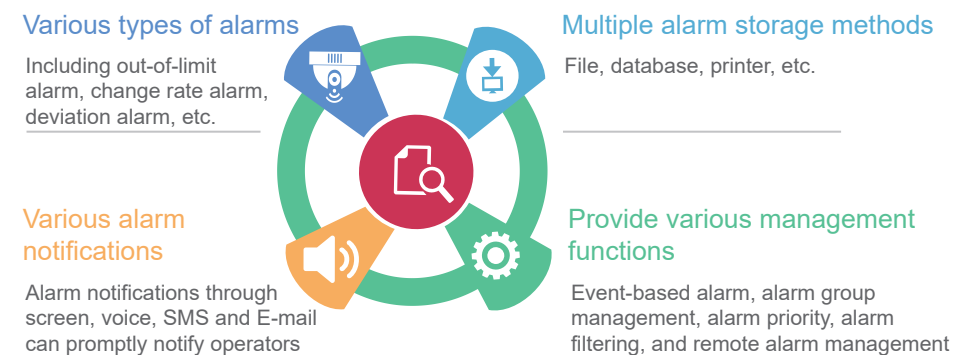


Convenient graphic system

Screen creation in KingView offers a convenient and powerful solution. It provides an extensive library featuring a variety of images and a widely-used wizard library, both commonly employed across different industries. Engineers have the flexibility to generate their own personalized graphic library. The system also supports an unlimited range of colors, including intermediate shades, enabling users to create vivid and aesthetically pleasing monitoring screens effortlessly. KingView supports multiple graphic formats, including GIF, JPG, BMP, and more. It allows the import of vector graphics in SVG format, empowering users to leverage existing resources effectively and create real-time, dynamic monitoring screens with ease.

Flexible data alarms

KingView provides real-time and historical alarms with various alarm methods.



Powerful and convenient reporting system

Data report is an important form of recording and displaying data in the production process, and is an essential part of the production process. It can reflect the real-time production status of the system, and record and analyze the long-term production process, so that managers can grasp and analyze the production status in real time.

KingView is equipped with the report system, which can produce the real-time and historical reports.

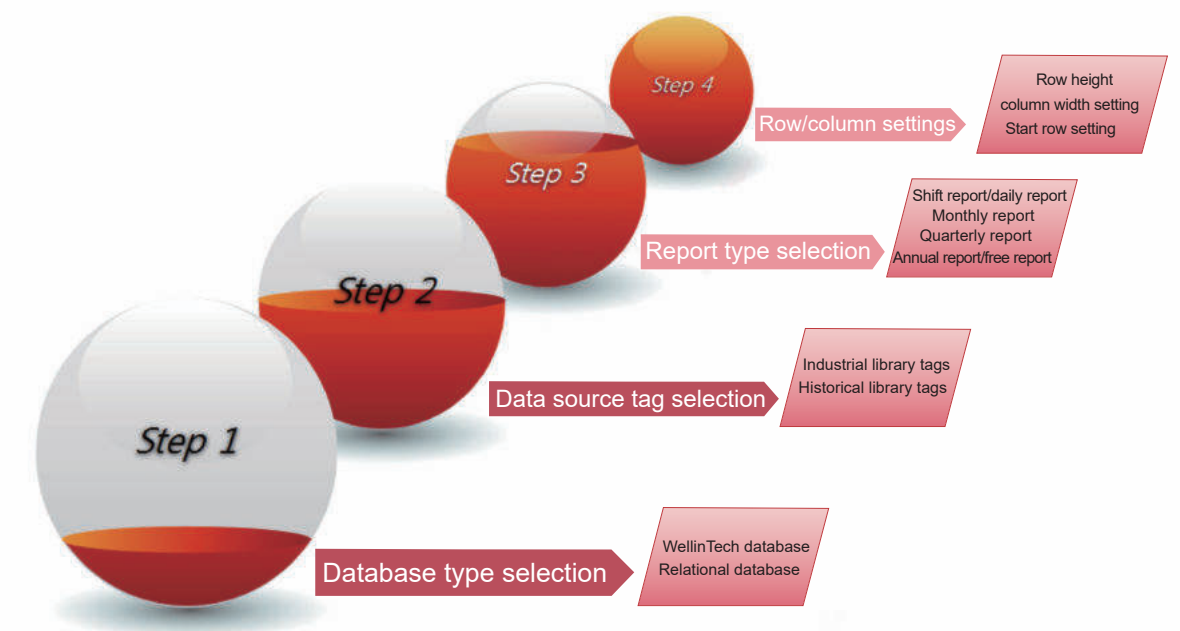
Engineers can set up any report format and configure the reports, including the statistics of column values, locking/unlocking of columns, addition of images in cells, merging of cells, setup to row height, column width, text alignment, background color and font color, etc. It can also save reports in the formats of Excel files and open Excel files in reports.

KingView provides rich report functions for engineers to realize various operations, data conversion, statistical analysis, report preview and printing, etc.

The report wizard function provided can, using the historical database of KingView industrial database KingHistorian, and relational databases as data sources, quickly create the required shift report, daily report, weekly report, monthly report, quarterly report, annual report and free report without scripting.

In addition, engineers can create a variety of report templates to eliminate the redundant tasks and promote development efficiency.

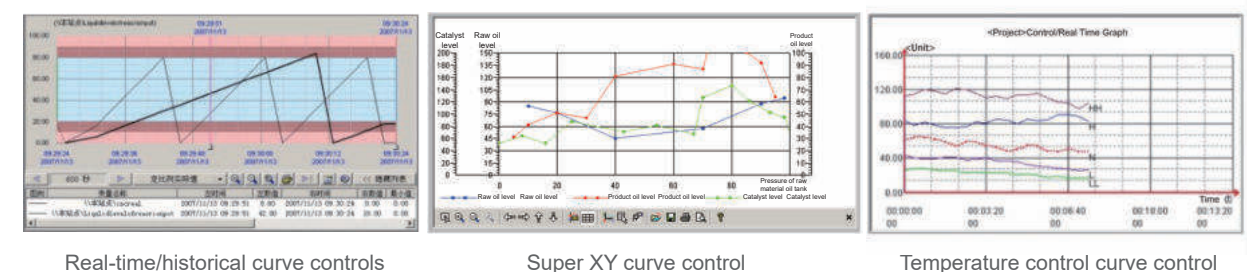
Wizard-style report generation steps



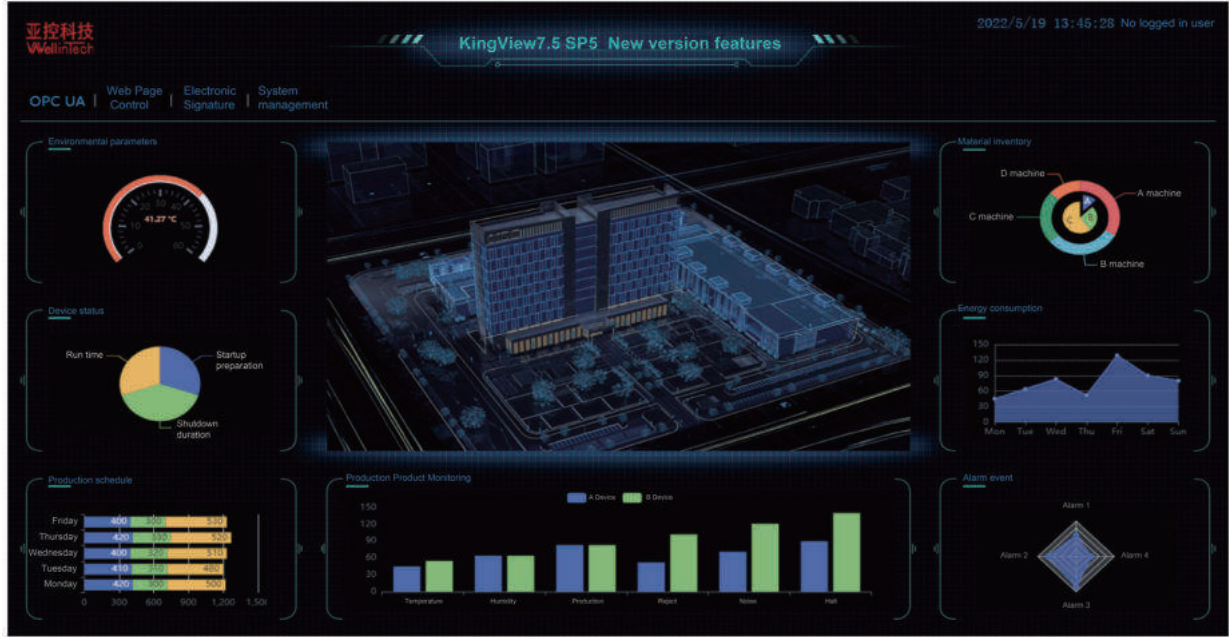
Rich and professional controls

KingView provides the special controls for various functional scenarios, such as:

- Various curve controls, real-time and historical trend curve controls, super XY curve controls, temperature control curve controls, etc. It supports adding and deleting curves dynamically and various curve drawing methods. It can realize the functions of stepless scaling of curves, historical data comparison, historical curve printing, etc. Data sources include the historical database of KingView, industrial database KingHistorian and relational databases.



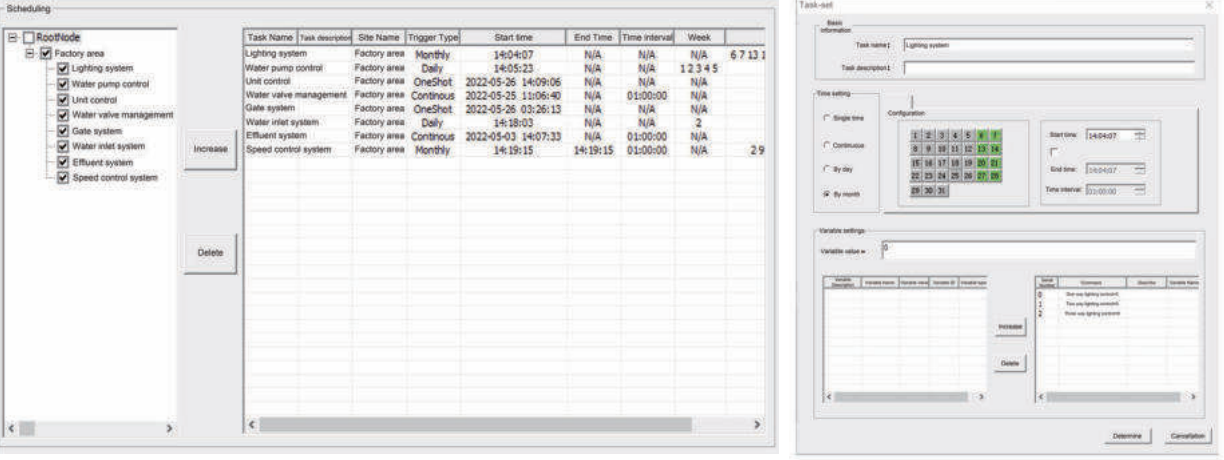
- Web controls, which provide interaction with front-end web and can access online URL, display local web file and perform data interaction, such as embedding Echarts charts to display KingView data in real time.



- Video controls, which support the video access of video device manufacturers, such as HIKVISION, Dahua, Uniview, etc.



- Scheduling controls, which are widely used in the building industry, can set the start/stop. Schedule in four modes: single, continuous, daily and monthly, and are necessary in many start/stop equipment application scenarios as scheduled, such as lighting control, machine rooms of buildings, etc.



- Support Windows standard ActiveX controls (mainly visual controls), including the standard Active controls provided by Microsoft and user-made Active controls, so that users can flexibly develop the controls they need, or call a standard control to complete complex tasks without tedious works, and facilitate the expansion of applications.

Multiple external data interfaces with openness

KingView provides a variety of safe and reliable data access interfaces.

- C++/C#
- Standard OPC Server interface
- HTTP (S) Server
- Webservice

Users can access the data of KingView through system integration or secondary development, so that they can conveniently interact and integrate with third-party systems to improve the value of data utilization.

Web publishing function

KingView supports publishing the screen and data to webpage, which is convenient to view factory information at any time and any place, understand the work status on site, manage production personnel, and realize the centralized management to factory information. The Web publishing function of KingView supports the remote monitoring software with B/S structure, allowing for effortless and continuous interconnectivity.

Mobile client, adapting to the needs of the mobile internet era

The mobile client function of KingView enables production managers and operators to understand and control the production process and equipment operation in time, view the real-time data, alarms and analysis reports of the production process on mobile terminals, and generate various kinds of reports and trend charts quickly to facilitate the mobile working. This makes the production process more transparent to the management and improves the management efficiency.

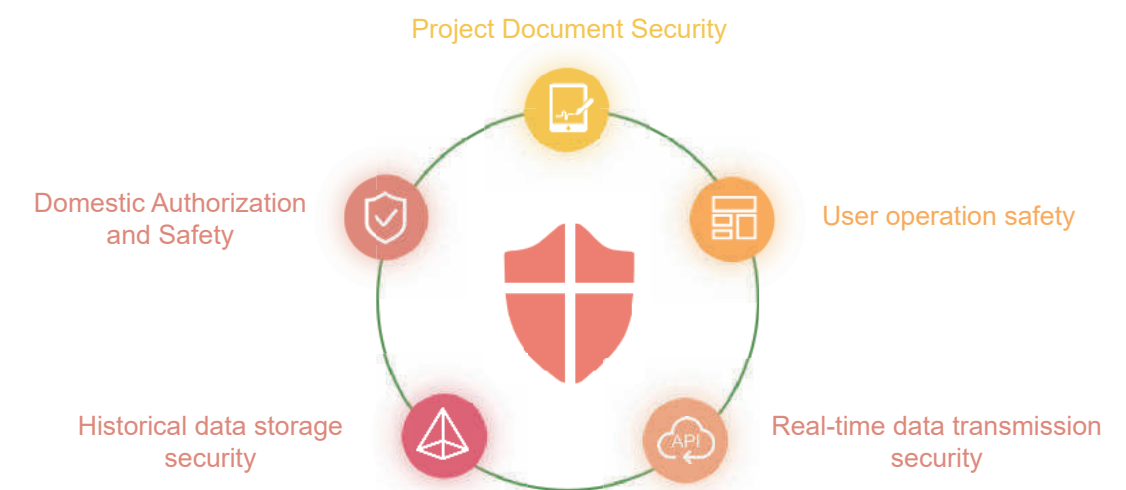


Main features:

- Supports multiple platforms of Android, Windows, etc;
- The mobile terminal provides reports, trend curves and other ways to display various types of data;
- Monitor the real-time alarm data on the mobile terminal;
- Easily operate and control the equipment on the mobile terminal, such as the start/stop of equipment, parameter setting, etc;
- Secure user management and the access to data reading and writing, to ensure the security of operation and data browsing;
- Flexible deployment, with the support to the release of LAN, public network and domain name. Can use it through browser or APP;
- Thin client with low data traffic can save costs;
- APP alarm message notification can timely access fault data on site;

Multiple Encryption Methods for Greater Security

In recent years, frequent cyberattacks have led to substantial losses for the nation and businesses. To address this, focusing on localizing and self-regulating information security is crucial for national and network security. Increased government investments, improved enterprise awareness, and emerging markets like industrial control, cloud computing, and smart devices will speed up the transition to domestic information security solutions.



- Support project encryption and secondary authorization for enhanced security in project development. This prevents unauthorized access, safeguards intellectual property, and grants flexible control to project implementers, ensuring their rights are protected."
- Offers robust multi-level user and permission management, including security zones and priorities. This ensures that only authorized users with the necessary permissions can access and operate specific screen and graphic objects, promoting standardized and secure production system operations.
- Supports real-time data transmission encryption and provides OPC UA/HTTPS Server/WebService data transmission information encryption + engineering user verification to ensure the security of information docking with third-party systems.
- Supports tamper-proof historical data storage. Binary-based historical data file storage prevents any editor from opening and modifying, ensuring the uniqueness and authenticity of the data.
- Support domestic encryption locks One by One Shensi Sensei 5, responding to the national information security call.

Kingview's authorization methods include hardware lock authorization and soft authorization. The soft authorization method provides convenience for engineering applications that are inconvenient to use hardware locks (such as network access, remote desktop, virtual machines, cloud platforms, etc.), and has higher flexibility and stability. The soft authorization method also saves customers the time of waiting for hardware lock authorization delivery and the cost of managing hardware lock authorization, and prevents damage and loss of hardware locks.

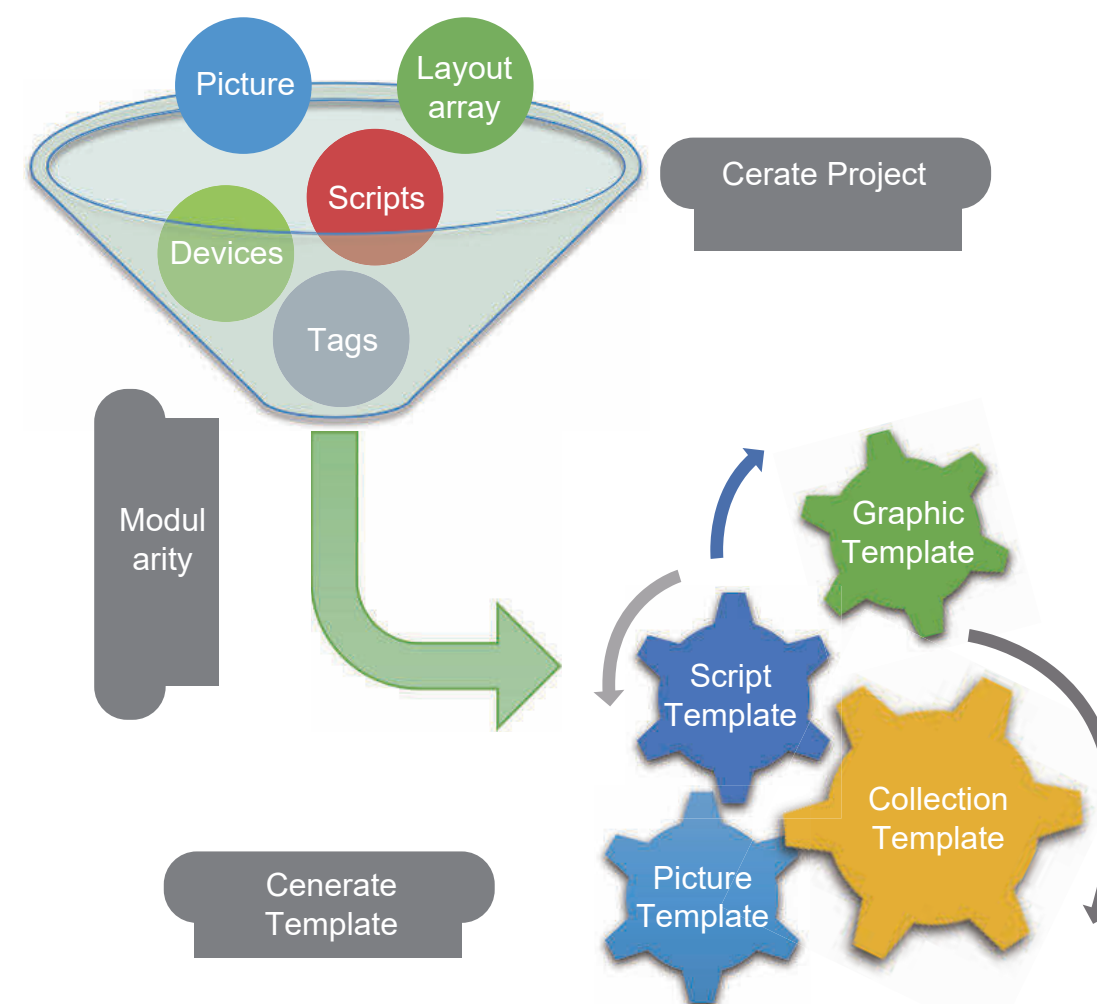
The authorization system allows the authorization lock to be used across different computers with the KingView application, enhancing authorization efficiency as it can be used sequentially.

Engineering template, high configuration reuse efficient

Use modular design for equipment, variables, scripts, screens, and project configurations to boost reusability and enhance engineering efficiency during implementation and deployment.

Template types provided:

- Collection template, a reference template for generating equipment information.
- Script template, a reference template for freely combining various command languages to generate command languages.
- Picture template, a reference template for generating complete project screens in the project.
- Graphic template, a special screen template that includes a sprite layout array in the screen.



Electronic signature & electronic record function conforming to FDA 21CFR Parti 11 & GMP requirements

Electronic signature & electronic record is a signature method that requires operators to record the whole production process in food and pharmaceutical industries in order to standardize production management. It has clear requirements for configuration software, which requires the strong security and strict user authentication, authority management and auditing means, and needs to meet the special requirements for security under FDA CFR 21 Part 11. All of the configurations are to regulate production and reduce production accidents.

KingView provides the electronic signature & electronic record function, which can meet the technical.

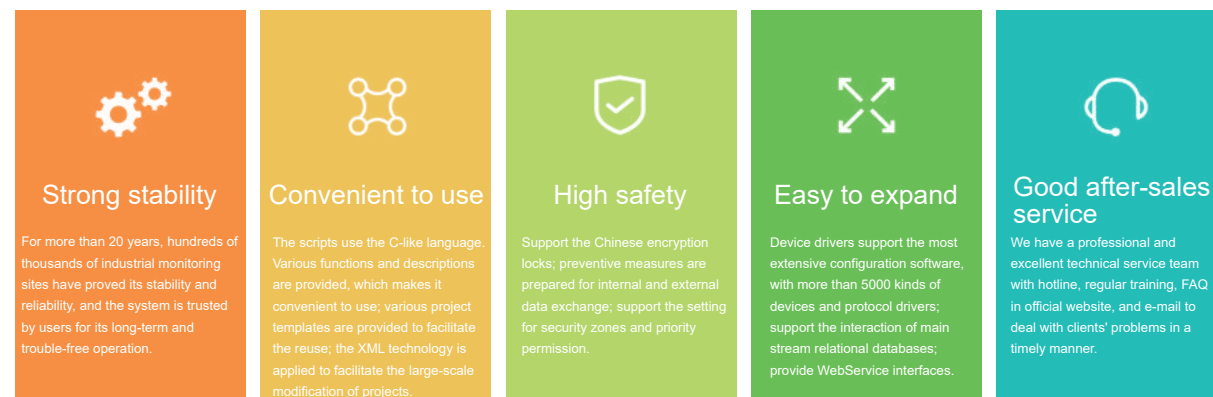


Product optimization

KingView has been improved in the following aspects, which provide strong supports for users to improve the efficiency of project configuration and reduce project implementation costs.

- Optimize the operation of the project editor (drawing standard graphics by Shift, batch replacement of strings, etc.) to improve the efficiency of project configuration.
- Optimize the electronic signature operation and inquiry display to enhance flexibility.
- Web publishing with digital signature and browser-free security configuration make it more convenient.

- Add various report system functions, the operation functions in the running environment such as setting report cell property and inserting rows and columns, and enrich report access function scenarios.
- Add the function for selecting file (folder) pop-up windows, and optimize the methods for saving and loading reports and other files.
- Add SQL asynchronous operation functions to improve the performance of accessing relational database.
- Add multi-measurement point trend curve controls for rapid inspection of products in production line automation scenarios.
- Enhance the password security policy and upgrade the execution authority of key functions to improve security.
- Built-in scripts support the timing and event triggering in many forms, which is the customized functions for expansion of applications. The scripts use the C-like language. Various functions and descriptions are provided, and the intelligent prompting function will be showed when entering the scripts, which makes it convenient to use.
- Built-in high-performance historical database can meet the long-term data storage.
- Support the recipe function, making the control process more convenient.
- Rich redundancy function, supporting dual machine redundancy, dual device redundancy, dual network redundancy, etc., The redundancy switching performs well with rapid response of 1 second.
- Support CS(Client-Server) and BS(Browser-Server) architecture modes, which is convenient for users to choose according to their needs.
- Support monitoring the data of KingView in the form of curves, charts, reports and alarms on the mobile/Web terminal.
- The template function and modular configuration unit make it convenient for project reuse and improve project configuration efficiency.
- Support internationalization, make the configuration project compatible with multi-language environment and configuration.
- Provide the project resolution conversion function, so as to flexibly adapt to the deployment environment.
- Support the import of AutoCAD graphics to the screen of KingView.
- Support XML import and export of project information to facilitate the large-scale modification to projects and make the system development and integration more flexible.
- Provide the secondary license function to help clients control project running time.



Key Advantages of KingView

- Device drivers support the most extensive configuration software, with more than 5000 kinds of devices and protocol drivers;
- More than 200000 licenses for more than 20 years with high stability and cost effectiveness;
- Rich functions make it convenient for users to improve productivity;
- The product can well continue to use in using habits, product style, project compatibility, etc., saving users a lot of learning costs and maintenance costs.
- Good openness and multiple ways to access data make it easy to use;
- Good product security, with preventive measures for both internal and external data exchange;
- It is widely used in industries, with numerous application cases to enhance its intrinsic value
- The professional and excellent technical service team with professional, efficient and enthusiastic technical support services can provide timely solutions for users. After-sales hotline, regular training, FAQ in official website and opinion mailbox.

Basic functions of the configuration software

Data acquisition; wizard-style report creation; graphical, audible, and email alarms. Flexible storage, forwarding and inquiry to data; Rich sprite library

Electronic signature complying with 21CFRPart11

Comply with the special security terms and conditions; have the functions of user authentication, license management and audit tracking.

Monitoring data on mobile devices

Access to data at anytime through LAN and public network; humanized operation of reports, curves, and alarm data; security restrictions on reading and control.

Deep interaction with webpages

Load html file and display it to the control; realize the data interaction between KingView and JS through JS interface function and the method function of the control.

Version description

The latest version of KingView is 7.5 SP5, which incorporates the latest functionalities, including support for OPC UA, MQTT, HTTP(s) Server, and WebServices. These enhancements have been optimized to enhance availability, scalability, security, and overall system stability."

Users can download the installation disk of KingView from the official website of WellinTech (www.kingview.com or www.wellintech.com)

Customer oriented

